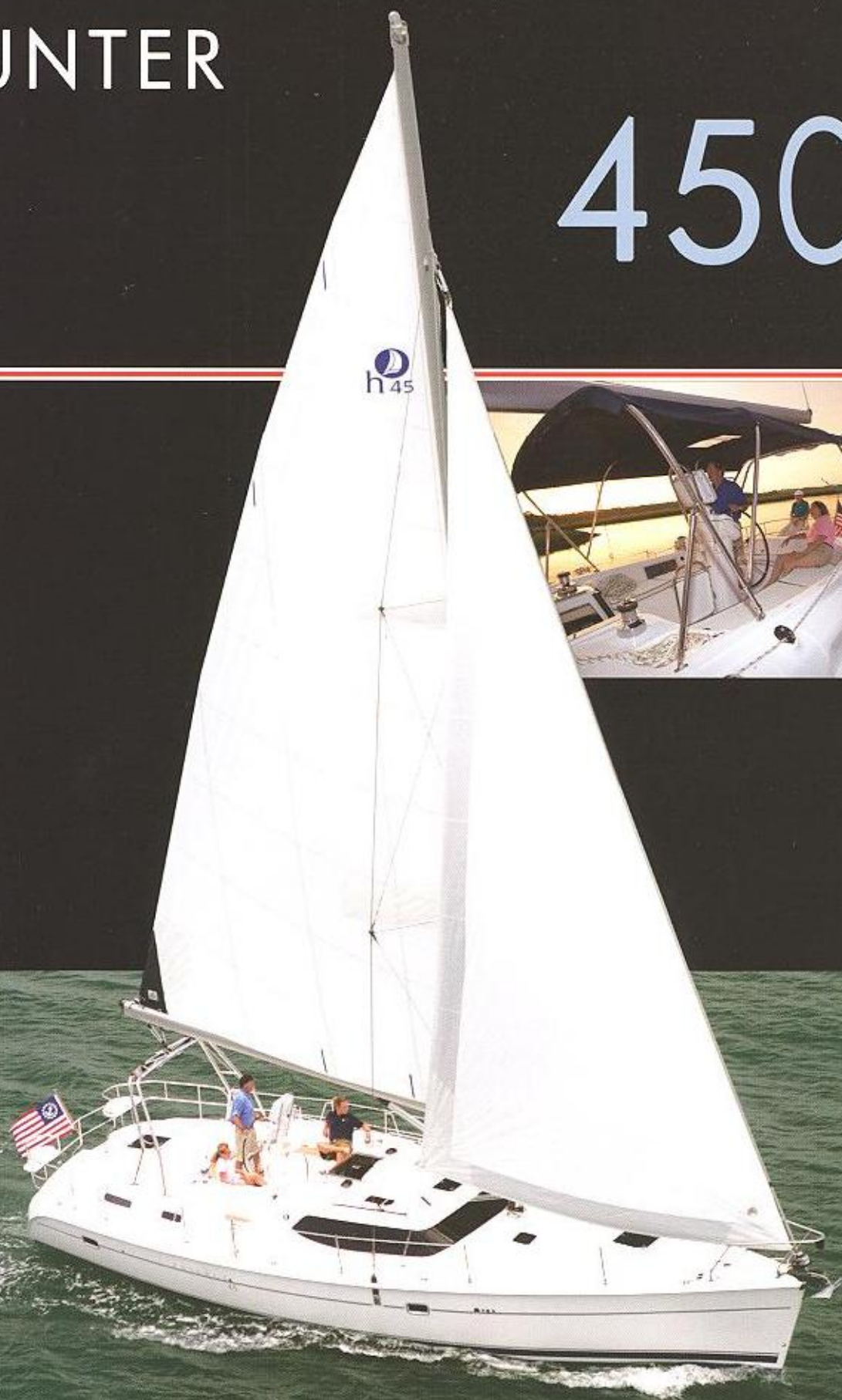


 HUNTER

4500





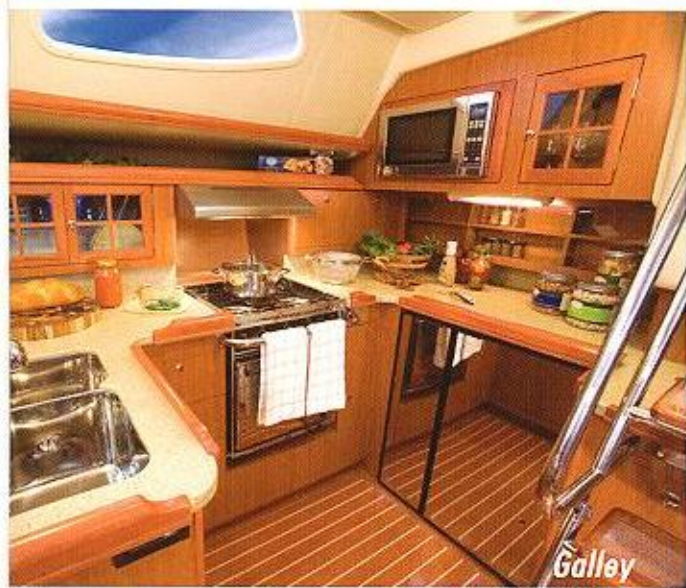
HUNTER 45CC

Hunter is the undisputed leader in center cockpit cruisers and the 45cc makes it easy to see why. A sleek, dramatic profile, easy handling sailplan and luxurious interior amenities are just the beginning. The Glenn Henderson designed hull is solidly constructed and shaped for lively performance and a smooth ride, even in rough sea conditions. The fractional sailplan is easy to control and balanced perfectly with the keel and large rudder to provide impressive response and precise control.

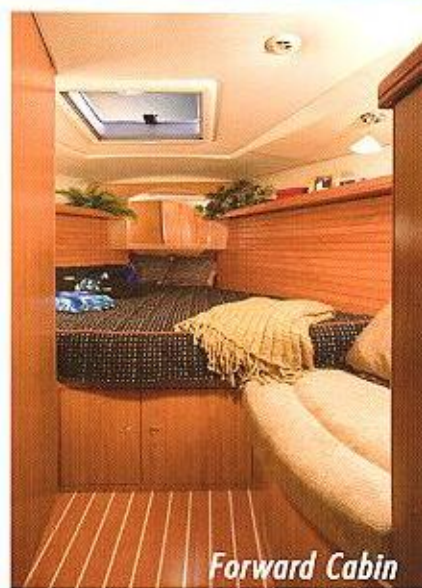
Below decks, the spectacular aft master suite creates a new standard for liveability with amazing amounts of headroom, natural light, ventilation and storage capacity. The rest of the interior follows suit with nearly 7' of headroom in the open and airy salon. The ergonomic "U" shaped galley is efficient and loaded with storage space to hold provisions and cookware for extended cruising. An adjustable chair brings comfort to the modern nav station whether it's used for navigating to far away destinations or as a dockside live-aboard office. Forward stateroom quarters offer the crew a comfortable and private space of their own with an innerspring mattress, ample storage, ensuite head, and a stall shower.

As with all Hunters, systems access and standard safety equipment is unsurpassed. If you long to stand up and stretch out, the spacious accommodations of the Hunter 45cc will add a whole new dimension to your cruising enjoyment.

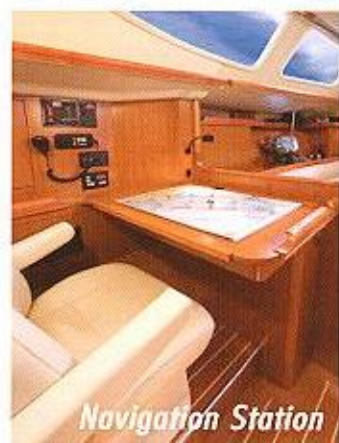




Galley



Forward Cabin



Navigation Station



Standards and Options

RIGGING

Boom Vang
Reefing System, Dual Single Line Led Aft
Inboard Jib Tracks w/Adjustable Cors
Internal Halyards Led To Cockpit
Jib Furling System
Jib, 110% Furling w/Acrylic Sun Cover
Mainsail, Full Roach w/Flaking System and Sail Cover
Mainsheet Purchase System, Lead to Cabin Top
Mast, Selden® B&R w/Fractional Sailplan
Rigging Line Stoppers and Organizers, Two Sets
Traveler, Arch Mounted for Mainsheet
Winch Handles (2)
Winches, (2) Rigging, 2-Speed Self Tailing, #40
Winches, (2) Jib at Helm, 2-Speed, Self-Tailing #48
Windex Wind Indicator

DECK/HULL

Anchor Roller, Double Offset
Anchor Well w/Space for Rode and Chain
Anchor Windlass, Electric
Bow Pulpit, Stainless Steel
Cockpit Traveler Arch™, Stainless Steel w/Mainsheet
Traveler
Deck Handrails, Stainless Steel
Dorade Vents (2)
Fresh Water Hook-Up, Docksida
Hatches, (7) Opening Deck w/Screens
HKT Kevlar Hull Reinforcement
Hull, FRP/ Balsa Sandwich Above Waterline, Solid FRP bottom
Hull, Structural Grid Reinforcement
Keel, Shoal Draft
Lifelines, Double w/Three Gates and Stainless Stanchions
Lockers, (2) Transom Storage
LPG Tank Storage for (2) Baffles
Maxguard® Gelcoats for UV Protection
Mooring Cleats, (8) Stainless Steel
Nonskid Deck
Ports, (2) Fixed
Ports, (8) Opening w/ Screens
Rubrail, Full Wrap w/Stainless Steel Insert
Rudder, Balanced Spade w/Stainless Steel Shaft
Swim Platform w/Stainless Steel Telescoping Ladder
Through Bolted Hull to Deck Joint w/Full Rubrail
Through-Hull Fittings, All Bronze Below Waterline
Windshield Fixed Parts, w/Cover

COCKPIT

Steering Console with Single Lever Engine Control, Wheel
Broke Lighted Compass, Space for Instruments,
Stainless Guard and Lowmar Direct Drive Steering System
Bilge Pump, Manual
Cockpit Traveler Arch™, Stainless Steel w/Mainsheet
Traveler
Cockpit Grabrail w/Integral Fold-Out Table
Plashtek® in Cockpit and Swim Platform
Halyard Tail Storage Wells
Lockers, (2) Cockpit Storage
Stem Rail Seats w/Drink Holders
Transom Shower, Hot & Cold

FORWARD CABIN

Cabin Lighting
Designer Bedding Fabrics
Electrical Outlets, AC and DC
Hanging Locker, (1) Cedar Lined
Hatches, (2) Deck, Opening w/Screens
Head, Private w/Stal Shower, Vanity, Corian Counter, & Opening Hatch
Mattress, Innerspring with Bedding Package
Seat, Dressing
Shower Sump Pump
Smoke and Carbon Monoxide Detectors
Storage Cabinets (3)
Storage Shelving
Storage Under Berth

AFT CABIN

Bench Seating on Port Side
Berth, Queen w/Innerspring Mattress & Bedding Pkg
Cabin Lighting

Corian Nightstand Counters w/Stainless Steel Fiddles and Drawers
Electrical Outlets, AC and DC
Handrails, Hardwood
Hanging Lockers, (2) Cedar Lined
Headboard, Padded
Lounge Chair
Dresser w/(4) Drawers, Corian Countertop, and (2) Shelves
Parts/Hatches, (8) Opening w/Screens
Private Entrance to Head
Storage Cabinet or Space for Optional Washer/Dryer
Storage Drawers/Bins (9) Around Bed
Vanity Desk w/Mirror and Storage Space

AFT HEAD

Electrical Outlets, AC and DC
Port, (1) Opening, Frosted
Shower Stall w/Adjustable Shower Head, Seat & Sump Pump
Storage Compartments
Vanity w/Corian Countertop

MAIN SALON

Accord Shades
Cabin Lighting
Courtesy Floor Lighting
Deck Side Windows, (4) Fixed w/Shades
Deck Windshield Ports, Fixed
Deluxe Cushion/Fabric Package
Dinette Table, High Glass
Dorade Vents (2)
Electrical Outlets, AC and DC
Everwear® Laminate Sole
Gloss Finish "Cherry" Woodwork
Handrails, Hardwood On Both Sides
Hatches, (2) Deck, Opening w/Screens
Ports, (2) Hull, Fixed
Selected Hardwood Trim
Shade Package, Supreme
Smoke and Carbon Monoxide Detectors
Storage Lockers on Hull Sides
Storage Shelving

NAVIGATION STATION

"Simpli-Panel" 12-Volt Switching System
Adjustable Chart Light
Chair, Custom
Chart Table, Opening
Electrical Outlets, AC & DC and Phone Jack
Space for Electronics
Storage Cabinet, Plotting Gear
Storage Cabinets

GALLEY

Corian Countertops w/Backsplash
Hatch, (1) Deck, Opening
Dish Selling Pkg for 6
Electrical Outlet, AC
Faucet, Chrome Pull Out Dual Function
Freezer, Front-Opening, Stainless Steel
Fresh Water System, Pressurized, Hot and Cold
Microwave/Coffeemaker Combination
Range Hood w/Light and Fan
Refrigerator, Front-Opening, Stainless Steel
Sinks, Double Stainless Steel w/Cutting Board
Storage Cabinets (6)
Storage Drawers (4)
Storage Shelving
Stove, Two Burner LPG Gimballed w/Oven
Waste Bin, Built-In

SYSTEMS/ELECTRONICS

12-Volt DC Electrical System w/Breaker Panel
54 HP Yanmar Diesel Aux Engine w/Three Blade Propeller
Alternator, 80-Amp
Battery Box, Engine Start
Battery Boxes, (3) House, Size 4D
Battery Charger, 50-Amp
Bilge Pump, Manual
Bilge Pump, Electric Primary 1500 GPH
Bilge Pump, Electric Secondary 4000 GPH w/ Alarm
Cable TV and Phone Jacks
Engine Panel, Deluxe w/Gauges, Hour Meter and Alarm
Fresh Water System, Pressurized, Hot and Cold

Gauges, Tank for Fuel, Water, and Waste
Isolation Transformer
Lights, Deck and Anchor
Navigation Light Package
NMMA Certification On All Systems
Propane Gas System for Cooking
Raymarine ST-60 Speed and Depth
Shore Pwr Sys, 120 Volt w/ Cord
Stereo AM/FM w/CD Player
Sump Pumps, Shower
VHF Radio w/DSC and Stainless Steel Antenna
Waste Holding Tank w/Macerator Pump
Water Heater, 11 Gallon
X-Change-R Oil Change System

GENERAL SAFETY

Air Horn
Anchor and Line
Carbon Monoxide and Smoke Detectors
Emergency Tiller
Fire Extinguishers, (2) Handheld
Fire Extinguishing System, Automatic In Engine Room
Fog Bell
GFI Receptacles
Hand-Held Flares
High-Bilge Water Alarm and Pump
Life Jackets (6)
NMMA Certification On All Systems
Reference Book, Chappmans Piloting
Throwable Floatation Cushion

OPTIONS

Air Conditioning System
Alternator Upgrade, 100 Amp
Barrier Coat, Epoxy w/Bottom Point
Bimini Top (m)
Boom Vang, Solid (Included w/In-Mast Furling Option)
Bottom Point
Bow Thruster
Cockpit Cushions
Cushions, Stern Rail Seats
Cushions, Sundeck
Deep Keel
Dodger, Canvas
Dynaplate® Grounding System (For SSB radio)
Engine Upgrade to 75HP (m)
Electric Rigging Winch Upgrade (Starboard Cabin Top) (m)
Freezer, Top Opening (m)
Furling Boom
Generator, Fischer Panda® 7.4 Max Rated KW
In-Mast Furling System w/Rigid Vang (m)
Inverter (m)
Leaf, Removable for Dinette Table (m)
Leather Interior Cushions
Mattress, Upgrade to Memory Foam (m)
Painted Hull
Quiet-Flush Head System (m)
Radar Module w/ Antenna for C/E Series MFD
Raymarine® 7000+ Autopilot
Raymarine® C-80 or C-120 MFD w/GPS at Helm
Raymarine® E-80 & 120 MFD w/GPS at Helm and Nav Station
Raymarine® ST-60 Wind (m)
Raymarine® Wireless Autopilot Controller
Shade Package, Supreme (m)
SIRIUS® Stereo Receiver and Antenna
Spare Rudder System
Spinnaker Gear
Steering Wheel, Folding Lowmar® (m)
Stereo, Base® 3•2•1® Ent. System Upgrade (Main Cabin) (m)
Stereo, Cockpit AM/FM/CD w/Arch Speakers (m)
Stereo, Stateroom AM/FM/CD w/Speakers
Stove Upgrade to 3 Burner (m)
Wood Slats in Forward Cabin (m)
TV for Main Salon, 23" Flat Panel (m)
TV for Staterooms, Flat Panel w/DVD Player
Vertical Baffles for In-Mast Furling (m)
VHF Remote MIC at Helm (m)
Washer/Dryer
Watermaker

(m) = mariner package



HUNTER
MARINE CORPORATION
AN EMMETT OWNERSHIP COMPANY
We Go The Distance

Route 441 • Post Office Box 1030 • Maitland, Florida USA 32615
(386) 462-3077 • Fax (386) 462-4077 • Toll Free US Only: (800) 771-5556
www.huntermarine.com • email: sales@huntermarine.com • customer-service@huntermarine.com

Hunter Marine reserves the right to modify or change, without notice, any materials, specifications, equipment and/or accessories. All measurements are approximate. Stocked equipment may vary by product sold outside the United States. Photography may show optional equipment, fabrics and/or configurations.



Salon



Aft Cabin



Head



Aft Head



Specifications

Length Overall	45'0"	13.72 m
Hull Length	42'2"	12.83 m
Waterline Length	39'2"	11.94 m
Beam	14'6"	4.42 m
Draft (Shoal)	5'0"	.52 m
Draft (Deep)	6'6"	.98 m
Displacement	22,936 lbs	10,404 kg
Ballast (Shoal)	7,389 lbs	3,355 kg
Ballast (Deep)	7,237 lbs	3,286 kg
Must Height (Standard)	57'4"	17.48 m
Must Height (Furling)	61'4"	18.70 m
Sail Area (Standard)	962 ft sq	89 m sq
Sail Area — (Furling w/ Vertical Batten)	956 ft sq	88 m sq
I	47'11"	14.61 m
J	14'8"	4.47 m
P (Standard)	46'6"	14.17 m
P (Furling)	50'0"	15.24 m
E (Standard)	20'9"	6.32 m
E (Furling)	20'10"	6.35 m
Headroom	6'9"	.06 m
Fuel Capacity	76 gal	88 L
Water Capacity	149 gal	64 L
Holding Tank Capacity	48 gal	182 L
Water Heater	11 gal	42 L
Auxiliary Power (Yanmar)	54 HP	56 kW
CE Classification	A 10	A 10

DESIGN

Glenn Henderson and the Hunter Design Team

*All measurements are approximate and subject to change without notice