

MANHATTAN 53







MANHATTAN 53

FLYBRIDGE MOTORYACHT

Style: Flybridge motoryacht

Accommodation: Up to 6 guests and 1 crew member

Tender and toys: Platform

Drives: Shafts

Performance: Up to 32 knots

A brand new concept hull, remarkably big for her length, the new Manhattan 53 presents a refreshing perspective on flybridge motor yachting at this size. And it's not just about styling. The 53 delivers even more practical purpose with a large volume hull and the option of joystick control for thrusters and shafts.

There's a new balance: greater shaded external areas, greater glazing for brighter accommodation, and a bigger aft cockpit under an extended flybridge, all providing more useable space.

Step through the wide opening doorway into the high ceilinged, daylight-bright saloon and the Manhattan 53 reveals new found space for a separate dining area, plus the helm station now has seating for two, all set amidst sweeping views. Quite exceptional, as is the extra headroom and space in the galley and three guest suites below. Accessed from the hydraulic bathing/tender platform, the optional crew cabin is bigger, too.

STANDARD SPECIFICATION

1 Construction

Hand-laid GRP
Gel coat including stripes
Vinylester skin coat with powderbound mat
Stitched multi-axial reinforced single skin bottom
Balsa cored hull topsides
PVC foam cored deck and superstructure
Hull stiffened with longitudinal stringers supported by transverse bulkheads and floors

2 Deck

Fittings all in stainless steel
8 x deck cleats in stainless steel
Delta anchor and 60m chain (galvanised)
Electric winch and capstan 24v with deck and helm controls 24v
Stemhead roller and anchor stop
Self draining chain locker-fender stowage
Pulpit and cockpit rails in stainless steel
Stainless steel fendering with rubber insert
IMCO navigation lights
2 x pantograph wipers 24v, windscreen washers
Ensign staff and socket
6 x fenders and 4 warps
Remote spotlight 24v
Curved safety glass windscreen

3 Bathing platform

Hydraulic fall and rise system
Fresh water marina connection
Dockside AC Shore power connection
Hot and cold swimming shower
Teak-laid bathing platform
Foldaway stainless steel swimming ladder

4 Aft cockpit

Self draining
Moulded staircase to flybridge
Upholstered seating with stowage underneath
Stern safety gates
Engine room access hatch
Overhead lighting 24v
Low level lighting 24v
Teak-laid cockpit and steps
Radio/CD remote control
Cockpit Speakers
Boat hook
Hand-held fire extinguisher

5 Flybridge helm position

Self draining
Deflecting screen (acrylic)
Hydraulic steering
Two helm seats
Sports steering wheel
Duplicate engine controls and instrumentation
Compass
Trim tab control
Echo sounder and speedlog repeater
Autopilot and GPS navigator controls
Instrument cover
Upholstered seating group
Storage below seats
Folding cockpit table
Sunbathing area forward
Stainless steel guard rails and grab rails
Glass holders
CD/radio/iPod for out side system
Cockpit speakers

6 Salon

Seating group
Coffee table
Drinks and storage cabinet
Television on fall and rise system
Radio/CD/DVD/Blu-ray Cinema system with iPod dock
Overhead lighting 24v
Double AC socket
Stainless steel sliding cockpit door to aft cockpit
Fitted carpet
Scatter cushions

7 Dining

Dining area with table
Wine cooler
Bar and glass cabinet
Overhead lighting 24v
Double AC socket

8 Main helm console

Two upholstered helm seat
Console with burr walnut type fascia
Hydraulic steering
Sports steering wheel
Radar/plotter
Autopilot
VHF radio dual station
Full analogue engine instrumentation
Electric speedlog
Depth sounder
Rudder indicator
Compass
Horn
Windscreen wipers and washers
Trim tab controls
Cigar lighter
Glass holders
Hand-held fire extinguisher
Double AC socket

9 Galley

Sink and drainer
Hot and cold water supply
Electric refrigerator
Electric freezer
Ceramic 3-ring touch control hob
Hob extractor fan
Microwave oven
Rubbish bin
6 place crockery set
6 place cutlery set
Cupboard and drawer storage
Double AC socket x 2
Overhead lighting 24v
Opening porthole with mosquito screen
Hand-held fire extinguisher
First aid kit

10 Master aft cabin

Double berth with storage and drawers beneath
Outboard cabinets
Bedside cupboards
Bedside table lamps
Settee
Hanging wardrobe with mirrored door
Overhead lighting 24v
Panoramic windows with large opening portholes
Double AC socket x 2
Television
Fitted carpet

11 Master en suite shower room and toilet

Electric toilet
Avonite counter top
Shower taps and accessories
Washbasin
Hot and cold water
Separate shower compartment
Extractor fan
Razor socket 240/110v
Mirrored cupboard
Towel rail
Bath and hand towels
Overhead lighting 24v
Opening porthole with venetian blind
Door to stateroom

12 Starboard guest cabin

Two single berths
Two reading lights 24v
Under-berth stowage
Hanging wardrobe with mirrored door
Overhead lighting 24v
Opening porthole with mosquito screen and curtain
Double AC socket
Flatscreen television
Fitted carpet

13 Forward VIP guest cabin

Double berth with storage and drawers beneath
Two reading lights 24v
Outboard lockers
Hanging wardrobe with mirrored door
Overhead lighting 24v
Opening portholes and curtains
Deck hatch
Double AC socket
Flatscreen television
Fitted carpet

14 Starboard VIP shower and toilet / day head

Electric toilet
Avonite counter top
Shower taps and accessories
Washbasin
Hot and cold water
Separate shower compartment
Extractor fan
Razor socket 240/110v
Mirrored cupboard
Towel rail
Bath and hand towels
Overhead lighting 24v
Opening porthole with venetian blind

15 Engine compartment and ancillaries

Twin engines with direct drive gearboxes
2 x separate fuel filters water separators
Aluminium fuel tanks with electric sender units
Freshwater engine top-up hose
Sound insulation throughout engine room
Automatic fire extinguisher
Automatic bilge pumps
Automatic flood pump with high level alarm
Extractor fans 24v

16 Electrical system

Generator with underwater silent exhaust
AC dockside connection
Main DC and AC electrical circuits protected by re-settable circuit breakers
Systems monitoring panel
Galvanic isolator
6 x batteries for engine starting 24v circuit
4 x batteries for domestic power 24v circuit
2 x batteries for generator starting 12v circuit
Battery coupling system
Battery switches controlled from locker in cockpit
Alternator split charging system
Battery charger for 24v circuits
Battery charger for 12v circuits
Water heater
AC outlet sockets throughout the boat
Electric bow thruster

17 Underwater gear

Direct shaft drive though half tunnels
4-bladed NAB bronze propellers
Bronze P-brackets
2 x stainless steel shafts
Dripless shaft logs
High-performance bronze rudders
Seawater strainers x 2 main engines /
1 x generator
Seacocks on all underwater fittings
Stainless steel trimtabs (hydraulic)
Full cathodic bonding system to zinc anodes

18 Systems

Aluminium freshwater tank
24v fresh water pressure system
Hot water tank
24v toilet system

19 Miscellaneous

Tool kit
Boat hook
4 x mooring ropes
6 x Fenders
2 x towel sets

Optional extras

Stern crew cabin (with single berth, toilet and washbasin)
Washing machine
Dishwasher
Hydraulic gangway
Teak flybridge decking
Stern thruster
Hydraulic bow and stern thruster and joystick manoeuvring system

PRINCIPAL CHARACTERISTICS

MANHATTAN 53

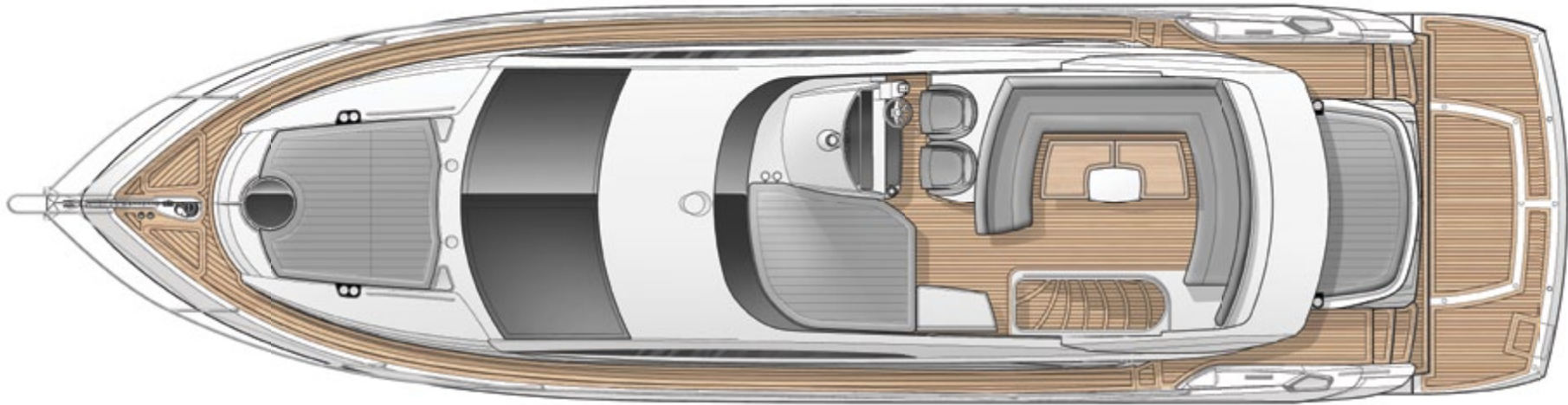
PRINCIPAL CHARACTERISTICS

Classification	CE	
Length overall – (incl. pulpit)	18.35m	60'2"
Length overall – (excl. pulpit and platform)	15.85m	52'0"
Length waterline – (@ half load)	13.60m	44'7"
Beam – (maximum)	4.70m	15'5"
Maximum draft – (incl. props)	1.26m	4'2"
Displacement – (@ half load)	27,400kg	60,389lb
Fuel capacity	2,200 litres	580 US gal.
Fresh-water capacity	600 litres	158 US gal.
Propulsion	Twin prop	
Engine options	up to 1600 PS (total)	
Fuel options	Diesel	
Generators – standard	1 x 11kW @ 50Hz (Euro) 1 x 13.5kW @ 60Hz (US)	
Maximum speed	up to 32 knots*	
Cruising speed	23 knots*	
Range	up to 250 miles*	

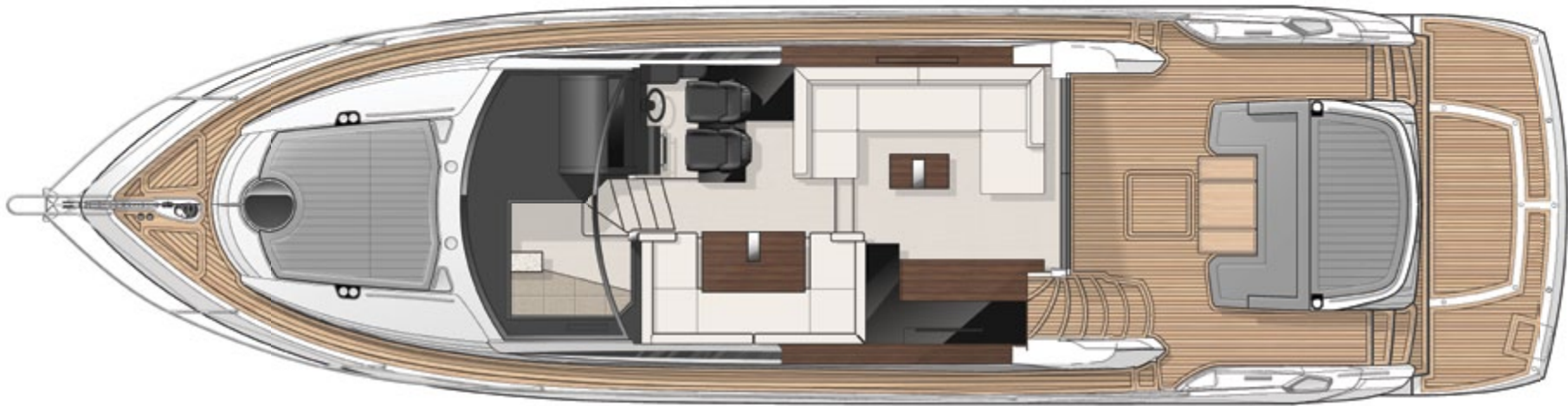
All principal characteristics and specifications are provisional and subject to final specification.

GENERAL ARRANGEMENTS

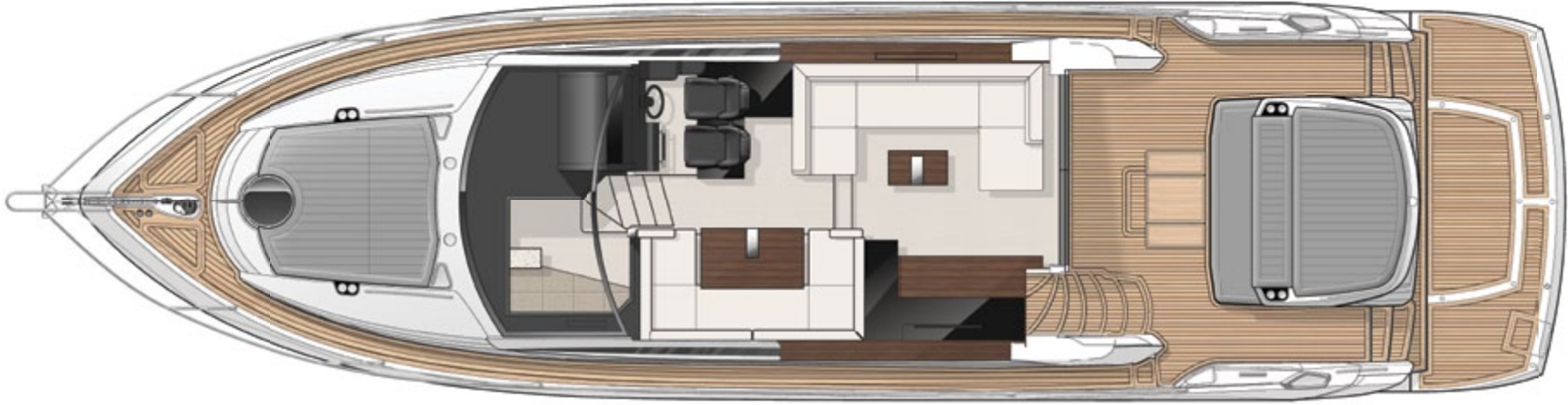
MANHATTAN 53



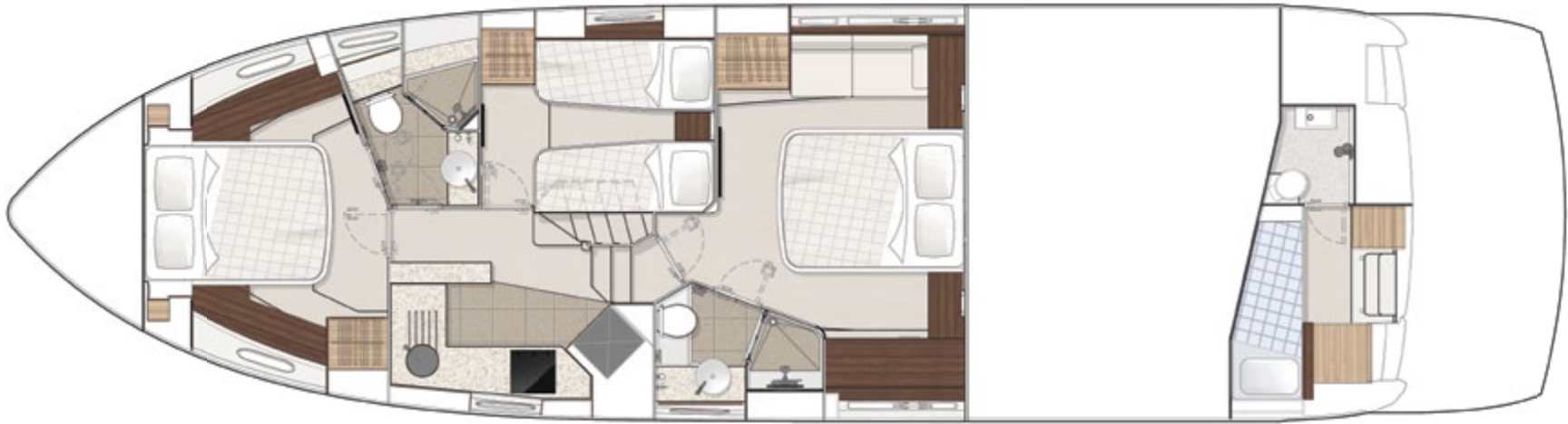
Flybridge



Main deck



Main deck option



Lower deck



Awards

Sunseeker's success over the years is clearly underlined by the following list of national and international awards and achievements.

2011	Asia Boat Awards	Best brand presence in Asia	2004	Sydney Boat Show 2004	Best Overall Display
2011	European CEO corporate lifestyle awards	Best luxury brand	2004	Sydney Boat Show 2004	Best Marina Display
2011	Showboats Design Awards Florida	Naval architecture motor yacht 'Evil Zana' Predator 130.	2003	Australian Marine Awards	Manhattan 56, Award for Excellence
2010	World Superyacht Awards	Predator 130 'Evil Zana' – finalist	2003	Australian Marine Awards	Predator 68, Best Imported Non-Trailable Yacht
2010	Quintessentially Awards	Yacht charter of the year	2002	Entrepreneur of the Year Award	Robert Braithwaite MBE
2010	Sydney Boat Show	Boating Industry Association of NSW – Best Marina Display 2010	2001	Best Power Design Award	105 Yacht, The Superyacht Society
2010	Sydney Boat Show	Boating Industry Association of NSW – Best Overall Display	2001	Best Power Interior Award	105 Yacht, The Superyacht Society
2010	Asia Boating Awards	Predator 60 – Best Production Motor Yacht 51 to 80 feet	2001	President's Award	Southern California Marine Association
2009	Sydney Boat Show 2009	Display of Excellence	2000	Queen's Award for Enterprise	Continuous innovation and development
2009	Croatia Boat Show 2009	Predator 92 Sport – best in class	2000	The Times Exporter of the Year	Times Export Awards
2009	Croatia Boat Show 2009	30 Metre Yacht – best in class	2000	Robb Report Award	Best of the Best, Boating and Sailing
2009	Croatia Boat Show 2009	Best boat show stand	1999	Robb Report Award	Best of the Best, Boating and Sailing
2008	UK Motor Boat of the Year Awards 2008	Manhattan 60	1999	Motorboat of the Year	Predator 75, BT British Nautical Awards
2007	European Powerboat of the Year	Superhawk 43	1998	Superyacht Design Award	Manhattan 74, Superyacht Design Awards
2007	Asia Pacific Boating Awards	90 Yacht, Best of the Best	1998	Editor in Chief Awards	Yachts Magazine
2007	Modern Boating Magazine 2007	Portofino 47, Imported Powerboat of the Year	1997	Lifetime Achievement Award	Robert Braithwaite MBE, RYA Awards
2007	Australian Marine Industries Federation Awards	Predator 62, Imported Powerboat of the Year	1996	Motorcruiser of the Year Award	RYA British Nautical Awards
2007	Nominated by The Superyacht Society	37 Metre Yacht 'The Snapper'	1996	Exporter of the Year Award	DCCI Export Awards
2007	Queen's Award for Enterprise	International Trade	1995	Boat Builder of the Year Award	RYA/BMIF British Nautical Awards
2007	Robert Braithwaite is honoured with CBE	The Queen's Birthday Honours List	1994	Queen's Award for Export Achievement	Queen's Awards for Industry
2006	Nominated for three Superyacht Awards	Predator 108 'SHIVER'	1992	Best in the World Award	Renegade 60, Boating Magazine
2005	Australian Marine Industries Federation Awards	75 Yacht, Non-Trailable Boat Award	1992	Robert Braithwaite is honoured with MBE	The Queen's Birthday Honours List
2005	Australian Marine Industries Federation Awards	Portofino 46, Commendation	1990	Exporter of the Year	SW International Business Awards
2005	Modern Boating, Power Boat of the Year Awards	Predator 68, Imported Powerboat of the Year	1989	Queen's Award for Export Achievement	Queen's Awards for Industry
2005	Boats.com Marine Industry Web Awards	Manufacturers Category for www.sunseeker.com	1987	Queen's Award for Export Achievement	Queen's Awards for Industry



Sunseeker International Limited has CE Approval which is compulsory for all boats with a LOA of 24m and below when sold in the EU.



QUINTESSENTIALLY BRITISH

*Every attempt has been made to give accurate information, but performance and range figures are estimates given as a guide only. Dirt or growth on the hull, tuning of the engines, size, make of engines fitted, damage to propellers, the temperature of the air and water, the weight of fuel, water, stores, number of people, propeller pitch, quality of fuel and other matters, can all affect a boat's performance and range. For these and other reasons we can give no performance, range or other guarantees, and neither such guarantees nor anything contained herein constitutes an offer of contract or any representation or agreement, or may otherwise be relied upon. The photographs and artist's impressions in this brochure are from existing models in the Sunseeker range. There may be items shown in these photographs and artist's impressions that are not included in the standard inventory of the models shown. Specifications contained in this brochure are provisional only and should not be relied upon and may refer to models only intended for sale in a particular territory and not generally. No guarantee is given that any model will be available in any territory; however by contacting us we can advise you of models that are likely to be available in each territory. In some examples herein we have referred to measurements, specifications or other details applicable to a particular territory and no guarantee is given that these are applicable to your territory. Actual specifications will be provided when a sales order or enquiry is placed with us or our approved Sunseeker distributor. Specifications for models sold in different markets may vary and specifications and models may be changed or withdrawn at any time without prior notice. The individual specification for each vessel will be agreed as part of the sale contract between the purchaser and the Sunseeker distributor. Distributors are independently owned and operated entities, and therefore Sunseeker distributors are not owned by Sunseeker International Limited or any subsidiaries or other related entity of this company nor are they their agents. Therefore they have absolutely no authority to commit Sunseeker International Limited, or any subsidiary or other related entities of Sunseeker International Limited to any pledge, contract or agreement in any form or by any means unless first accepted in writing by Sunseeker International Limited. For ease of reference we have, in some cases, referred to "we" or "Sunseeker" and these terms should be taken to mean Sunseeker International Limited.